



Autoimmune encephalitis: clinical spectrum and management

Christopher E Uy ,^{1,2} Sophie Binks ,^{1,2} Sarosh R Irani ^{1,2}

¹Oxford Autoimmune Neurology Group, Nuffield Department of Clinical Neurosciences, Oxford, UK

²Department of Neurology, Oxford University Hospitals NHS Foundation Trust, Oxford, UK

Correspondence to

Prof Sarosh R Irani, Oxford Autoimmune Neurology Group, Nuffield Department of Clinical Neurosciences, Oxford University, Oxford, Oxfordshire, UK; sarosh.irani@ndcn.ox.ac.uk

Accepted 14 May 2021

Published Online First
9 June 2021



ABSTRACT

Autoimmune encephalitis defines brain inflammation caused by a misdirected immune response against self-antigens expressed in the central nervous system. It comprises a heterogeneous group of disorders that are at least as common as infectious causes of encephalitis. The rapid and ongoing expansion of this field has been driven by the identification of several pathogenic autoantibodies that cause polysymptomatic neurological and neuropsychiatric diseases. These conditions often show highly distinctive cognitive, seizure and movement disorder phenotypes, making them clinically recognisable. Their early identification and treatment improve patient outcomes, and may aid rapid diagnosis of an underlying associated tumour. Here we summarise the well-known autoantibody-mediated encephalitis syndromes with neuronal cell-surface antigens. We focus on practical aspects of their diagnosis and treatment, offer our clinical experiences of managing such cases and highlight more basic neuroimmunological advances that will inform their future diagnosis and treatments.

INTRODUCTION

Autoimmune encephalitis comprises a group of disorders in which the host immune system targets self-antigens expressed in the central nervous system (CNS).¹ Some of the best-characterised diseases are associated with autoantibodies that target neuroglial antigens (table 1). These autoantibodies are considered pathogenic because they are directed against the extracellular—and hence *in vivo* exposed—domains of their target antigens.^{2–4} This fundamental property has led to much interest and excitement surrounding this rapidly expanding field, with new autoantibody targets described most years. Many established antigens are key synaptic proteins, ion channels or receptors, meaning that the extracellular domain-targeting autoantibodies are likely to directly modulate critical physiological processes.

This field is of major clinical importance to all neurologists because these patients present with a wide variety of neurological features and typically respond to immunotherapies. Therefore, these conditions are often considered ‘not to miss’ diagnoses, with defined pathogenic agents that can present to cognitive, movement disorder, epilepsy, psychiatry and peripheral nerve clinics.

In this pragmatic review, which reflects our experience of managing >200 cases with surface-directed autoantibodies, we highlight key clinical features to help identify these patients, outline immunological findings that inform laboratory testing and describe the clinically relevant disease biology of relevance to treatment decisions.

Autoimmune encephalitis is not rare

Until the discovery of neuroglial surface autoantibodies, infections were the most common known causes of encephalitis. However, over the last 20 years, the description of multiple autoantibodies targeting the extracellular domains of neuroglial proteins in patients with encephalitis has shifted this balance. For example, the California Encephalitis Project found that among persons under 30 years of age, N-methyl-D-aspartate receptor (NMDAR)-antibody encephalitis was more common than any individual infectious cause of encephalitis.⁵ Also, autoimmune causes of encephalitis have been reported to be at least as common as viral causes in Olmsted County, USA.⁶ Interestingly, the incidence of autoimmune encephalitis rose in the second 10-year epoch of this study, likely owing to growing awareness of these disorders and more widespread diagnostic capacities. Nevertheless, as fever, focal neurological deficits and cerebrospinal fluid (CSF) lymphocytosis remain inclusion criteria for many ‘all cause encephalitis’ studies, such approaches likely continue to underestimate the prevalence of autoimmune



© Author(s) (or their employer(s)) 2021. Re-use permitted under CC BY. Published by BMJ.

To cite: Uy CE, Binks S, Irani SR. *Pract Neurol* 2021;**21**:412–423.

Table 1 Demographic, clinical and paraclinical features of neuronal autoantibody syndromes

Neuronal auto-antibody (Ref.) and predominant IgG subclass	Median age, years (range)	Sex ratio (M:F)	Clinical features	MR brain scan findings	CSF findings	EEG findings	Other investigations	Immunotherapy response and outcomes
NMDAR ^{10,25,43,56} IgG1	21 (2 months–85 years)	1:4	Encephalitis with prominent polysymptomatic neuropsychiatric presentation, polymorphic movement disorder, language disorder, autonomic dysfunction, coma and central apnoea.	70%–80% normal or non-specific, with a typical limbic encephalitis in a minority.	80% abnormal (lymphocytic pleocytosis, unpaired oligoclonal bands common).	90% abnormal (slowing most common, 20% epileptiform abnormalities, rarely extreme delta brush pattern).	Ovarian teratoma in 60% of adult, female patients. After HSV encephalitis, particularly children can develop NMDAR (and other neuronal surface) autoantibodies.	~50% improve in 4 weeks with first line immunotherapy (IT). ~70% of non-responders improve soon after 2nd line IT. Improvement up to 24 months, with 80% reaching mRS 0–2. 10%–15% relapse risk—reduced by IT and tumour removal ~5% mortality.
LG1 ^{1,33,49,57} IgG4	64 (31–84)	2:1	Limbic encephalitis with frequent focal seizures, including characteristic facio-brachial dystonic seizures.	~75% abnormal. ~40% increased signal/swelling in medial temporal lobes (unilateral >bilateral).	~25% abnormal (mild pleocytosis with elevated protein).	~50% abnormal (~30% epileptiform abnormal, ~20% focal slowing).	>90% with HLA-DRB1*07:01. Hyponatraemia common (~70%).	At 2 years, 1/3 fully recovered, 1/3 functionally independent but unable to work, 1/3 severely disabled or dead. Relapses in 20%–30%; associated with poor outcomes.
CASPR2 ^{30,49,55} IgG4	66 (25–77)	9:1	Main syndromes: peripheral nerve hyperexcitability, limbic encephalitis and Morvan's syndrome.	~30% increased signal in medial temporal lobes.	~30% abnormal (pleocytosis, elevated protein=oligoclonal bands).	~70% abnormal (40% epileptiform abnormal).	HLA-DRB1*11:01. Thymoma in ~20% (often with LG1 antibodies in addition) Electromyography may demonstrate hyperexcitability (fasciculations, myokymia).	~50% with good or full response to tumour therapy/IT. ~45% with partial IT response. ~25% relapse.
GABA _A R ^{20,21} IgG1	40 (2 months–88 years)	1:1	Encephalitis with frequent status epilepticus.	>80% cortical and subcortical FLAIR signal abnormalities involving 2+ brain regions.	25–50% lymphocytic pleocytosis=oligoclonal bands and elevated protein.	>80% abnormal (encephalopathy with ictal abnormalities).	Thymoma ~30%.	IT-responsive, however, mortality due to status epilepticus or related complications ~10–20%.
GABA _A R ²² IgG1	61 (16–77)	1.5:1	Limbic encephalitis with prominent seizures.	~70% abnormal (45% increased signal in medial temporal lobes).	~80% lymphocytic pleocytosis.	~75% with ictal abnormalities.	Tumours in ~50% (mostly SCLC).	~90% show response to IT, those with tumour have poorer prognosis with recurrent neurological symptoms and higher mortality.
AMPA ³⁸	Mean 53.1 (14–92)	2:1	Limbic encephalitis with prominent confusion, amnesia, seizures and psychiatric/behavioural symptoms.	~85% abnormal (67% with bilateral mesial temporal involvement).	~70% abnormal.	45% abnormal.	Tumour identified in ~70% (thymus, SCLC, breast, ovary).	Most patients showed improvement from peak of disease, median mRS=1 in survivors. ~15% of reported patients died (commonly due to complications from malignancy).
DPPX ²⁷	53 (13–76)	1.5:1	Multifocal encephalitis with myoclonus, tremors and hyperplexia, prominent diarrhoea/weight loss.	100% normal or non-specific.	~30% abnormal (mild pleocytosis and elevated protein).	~70% abnormal (focal or diffuse slowing).	~10% with B-cell neoplasm (gastrointestinal follicular lymphoma; leukaemia).	60%–70% improve with IT.

Continued

Table 1 Continued

Neuronal auto-antibody (Ref.) and predominant IgG subclass	Sex ratio (M:F)	Median age, years (range)	Clinical features	MR brain scan findings	CSF findings	EEG findings	Other investigations	Immunotherapy response and outcomes
GlyR ²⁸ IgG1/3	1:1	50 (1–75)	3 main syndromes: stiff-person spectrum disorder PERM (progressive encephalopathy with rigidity and myoclonus limbic encephalitis).	<i>Brain:</i> temporal lobe inflammation in 5%, abnormal ~30%, mostly non-specific. <i>Cord:</i> ~20% (mostly short/ patchy lesions, 5% longitudinally extensive lesion).	~40% pleocytosis, 20% oligoclonal bands.	~70% abnormal (55% diffuse slowing, 15% focal epileptic abnormal, 5% focal slowing).	EMG abnormal 60% (continuous motor unit activity, spontaneous or stimulus-induced activity, neuromyotonia) Thymoma in 15%.	~10% mortality in initial case series. Good outcomes in survivors with median mRS=1 at latest follow-up. Duration of follow-up 18 months–7 years, 82% treated with IT.
MOG ^{17–19,59}	1:1	37 (1–74)	Optic neuritis, transverse myelitis, brainstem encephalitis, encephalitis.	<i>Brain:</i> ~75% abnormal (bilateral poorly demarcated subcortical lesions), ~30% brainstem involvement. <i>Cord:</i> ~50% abnormal, mixed STM/ITM with frequent conus medullaris involvement. <i>Orbit:</i> extensive, often bilateral, optic nerve lesions with frequent chiasmal involvement.	~60% lymphocytic pleocytosis oligoclonal bands uncommon.	Not reported.	Visual evoked potentials may show evidence of previous optic neuritis.	~75% have good response to corticosteroids. ~60% make a full or good recovery. Relapses are common.
IgLON5 ^{32,60} IgG1/4	1:1	64 (46–83)	4 main syndromes: sleep disorder (REM and NREM parasomnias, sleep apnoea) Bulbar syndrome Progressive supranuclear palsy-like syndrome Cognitive syndrome±chorea.	~80% normal/ non-specific. ~15% brainstem atrophy. 5% bilateral hippocampal atrophy.	30% CSF pleocytosis. 50% elevated protein (mean 64 mg/dL, 52–192). ~10% unpaired oligoclonal bands.	Not reported.	HLA-DRB1*10:01/HLA-DQB*05:01 alleles in 87%. No history of autoimmunity or cancer in 91%.	Up to 50% respond to initial IT but far fewer have a sustained response. Response better with combination therapy vs monotherapy (67% vs 32%) and better for second-line vs first-line therapy (59% vs 32%).
Neurexin-3α ⁶¹	1:2	44 (23–57)	Encephalitis.	20% mesial temporal T2/FLAIR signal abnormal.	100% abnormal (pleocytosis, elevated Ig index).	Not reported.		40% mortality despite IT, remaining 60% partial recovery in initial series.

*LG11-antibodies and CASPR2-antibodies were historically classified as antibodies against the Voltage-Gated Potassium Channel

AMPAR, α-amino-3-hydroxy-5-methyl-4-isoxazolepropionic acid receptor; CASPR2, contact-associated protein 2; CSF, cerebrospinal fluid; DPPX, dipeptidyl peptidase-like protein 6; EEG, electroencephalogram; GABA_AR, gamma aminobutyric acid; GlyR, glycine receptor; HSV, herpes simplex virus; IgLON5, immunoglobulin-like LON5, immunoglobulin-like LON5; IL1, interleukin 1; IL17, interleukin 17; IL23, interleukin 23; IL28, interleukin 28; IL35, interleukin 35; IL36, interleukin 36; IL37, interleukin 37; IL38, interleukin 38; IL39, interleukin 39; IL40, interleukin 40; IL41, interleukin 41; IL42, interleukin 42; IL43, interleukin 43; IL44, interleukin 44; IL45, interleukin 45; IL46, interleukin 46; IL47, interleukin 47; IL48, interleukin 48; IL49, interleukin 49; IL50, interleukin 50; IL51, interleukin 51; IL52, interleukin 52; IL53, interleukin 53; IL54, interleukin 54; IL55, interleukin 55; IL56, interleukin 56; IL57, interleukin 57; IL58, interleukin 58; IL59, interleukin 59; IL60, interleukin 60; IL61, interleukin 61; IL62, interleukin 62; IL63, interleukin 63; IL64, interleukin 64; IL65, interleukin 65; IL66, interleukin 66; IL67, interleukin 67; IL68, interleukin 68; IL69, interleukin 69; IL70, interleukin 70; IL71, interleukin 71; IL72, interleukin 72; IL73, interleukin 73; IL74, interleukin 74; IL75, interleukin 75; IL76, interleukin 76; IL77, interleukin 77; IL78, interleukin 78; IL79, interleukin 79; IL80, interleukin 80; IL81, interleukin 81; IL82, interleukin 82; IL83, interleukin 83; IL84, interleukin 84; IL85, interleukin 85; IL86, interleukin 86; IL87, interleukin 87; IL88, interleukin 88; IL89, interleukin 89; IL90, interleukin 90; IL91, interleukin 91; IL92, interleukin 92; IL93, interleukin 93; IL94, interleukin 94; IL95, interleukin 95; IL96, interleukin 96; IL97, interleukin 97; IL98, interleukin 98; IL99, interleukin 99; IL100, interleukin 100; IL101, interleukin 101; IL102, interleukin 102; IL103, interleukin 103; IL104, interleukin 104; IL105, interleukin 105; IL106, interleukin 106; IL107, interleukin 107; IL108, interleukin 108; IL109, interleukin 109; IL110, interleukin 110; IL111, interleukin 111; IL112, interleukin 112; IL113, interleukin 113; IL114, interleukin 114; IL115, interleukin 115; IL116, interleukin 116; IL117, interleukin 117; IL118, interleukin 118; IL119, interleukin 119; IL120, interleukin 120; IL121, interleukin 121; IL122, interleukin 122; IL123, interleukin 123; IL124, interleukin 124; IL125, interleukin 125; IL126, interleukin 126; IL127, interleukin 127; IL128, interleukin 128; IL129, interleukin 129; IL130, interleukin 130; IL131, interleukin 131; IL132, interleukin 132; IL133, interleukin 133; IL134, interleukin 134; IL135, interleukin 135; IL136, interleukin 136; IL137, interleukin 137; IL138, interleukin 138; IL139, interleukin 139; IL140, interleukin 140; IL141, interleukin 141; IL142, interleukin 142; IL143, interleukin 143; IL144, interleukin 144; IL145, interleukin 145; IL146, interleukin 146; IL147, interleukin 147; IL148, interleukin 148; IL149, interleukin 149; IL150, interleukin 150; IL151, interleukin 151; IL152, interleukin 152; IL153, interleukin 153; IL154, interleukin 154; IL155, interleukin 155; IL156, interleukin 156; IL157, interleukin 157; IL158, interleukin 158; IL159, interleukin 159; IL160, interleukin 160; IL161, interleukin 161; IL162, interleukin 162; IL163, interleukin 163; IL164, interleukin 164; IL165, interleukin 165; IL166, interleukin 166; IL167, interleukin 167; IL168, interleukin 168; IL169, interleukin 169; IL170, interleukin 170; IL171, interleukin 171; IL172, interleukin 172; IL173, interleukin 173; IL174, interleukin 174; IL175, interleukin 175; IL176, interleukin 176; IL177, interleukin 177; IL178, interleukin 178; IL179, interleukin 179; IL180, interleukin 180; IL181, interleukin 181; IL182, interleukin 182; IL183, interleukin 183; IL184, interleukin 184; IL185, interleukin 185; IL186, interleukin 186; IL187, interleukin 187; IL188, interleukin 188; IL189, interleukin 189; IL190, interleukin 190; IL191, interleukin 191; IL192, interleukin 192; IL193, interleukin 193; IL194, interleukin 194; IL195, interleukin 195; IL196, interleukin 196; IL197, interleukin 197; IL198, interleukin 198; IL199, interleukin 199; IL200, interleukin 200; IL201, interleukin 201; IL202, interleukin 202; IL203, interleukin 203; IL204, interleukin 204; IL205, interleukin 205; IL206, interleukin 206; IL207, interleukin 207; IL208, interleukin 208; IL209, interleukin 209; IL210, interleukin 210; IL211, interleukin 211; IL212, interleukin 212; IL213, interleukin 213; IL214, interleukin 214; IL215, interleukin 215; IL216, interleukin 216; IL217, interleukin 217; IL218, interleukin 218; IL219, interleukin 219; IL220, interleukin 220; IL221, interleukin 221; IL222, interleukin 222; IL223, interleukin 223; IL224, interleukin 224; IL225, interleukin 225; IL226, interleukin 226; IL227, interleukin 227; IL228, interleukin 228; IL229, interleukin 229; IL230, interleukin 230; IL231, interleukin 231; IL232, interleukin 232; IL233, interleukin 233; IL234, interleukin 234; IL235, interleukin 235; IL236, interleukin 236; IL237, interleukin 237; IL238, interleukin 238; IL239, interleukin 239; IL240, interleukin 240; IL241, interleukin 241; IL242, interleukin 242; IL243, interleukin 243; IL244, interleukin 244; IL245, interleukin 245; IL246, interleukin 246; IL247, interleukin 247; IL248, interleukin 248; IL249, interleukin 249; IL250, interleukin 250; IL251, interleukin 251; IL252, interleukin 252; IL253, interleukin 253; IL254, interleukin 254; IL255, interleukin 255; IL256, interleukin 256; IL257, interleukin 257; IL258, interleukin 258; IL259, interleukin 259; IL260, interleukin 260; IL261, interleukin 261; IL262, interleukin 262; IL263, interleukin 263; IL264, interleukin 264; IL265, interleukin 265; IL266, interleukin 266; IL267, interleukin 267; IL268, interleukin 268; IL269, interleukin 269; IL270, interleukin 270; IL271, interleukin 271; IL272, interleukin 272; IL273, interleukin 273; IL274, interleukin 274; IL275, interleukin 275; IL276, interleukin 276; IL277, interleukin 277; IL278, interleukin 278; IL279, interleukin 279; IL280, interleukin 280; IL281, interleukin 281; IL282, interleukin 282; IL283, interleukin 283; IL284, interleukin 284; IL285, interleukin 285; IL286, interleukin 286; IL287, interleukin 287; IL288, interleukin 288; IL289, interleukin 289; IL290, interleukin 290; IL291, interleukin 291; IL292, interleukin 292; IL293, interleukin 293; IL294, interleukin 294; IL295, interleukin 295; IL296, interleukin 296; IL297, interleukin 297; IL298, interleukin 298; IL299, interleukin 299; IL300, interleukin 300; IL301, interleukin 301; IL302, interleukin 302; IL303, interleukin 303; IL304, interleukin 304; IL305, interleukin 305; IL306, interleukin 306; IL307, interleukin 307; IL308, interleukin 308; IL309, interleukin 309; IL310, interleukin 310; IL311, interleukin 311; IL312, interleukin 312; IL313, interleukin 313; IL314, interleukin 314; IL315, interleukin 315; IL316, interleukin 316; IL317, interleukin 317; IL318, interleukin 318; IL319, interleukin 319; IL320, interleukin 320; IL321, interleukin 321; IL322, interleukin 322; IL323, interleukin 323; IL324, interleukin 324; IL325, interleukin 325; IL326, interleukin 326; IL327, interleukin 327; IL328, interleukin 328; IL329, interleukin 329; IL330, interleukin 330; IL331, interleukin 331; IL332, interleukin 332; IL333, interleukin 333; IL334, interleukin 334; IL335, interleukin 335; IL336, interleukin 336; IL337, interleukin 337; IL338, interleukin 338; IL339, interleukin 339; IL340, interleukin 340; IL341, interleukin 341; IL342, interleukin 342; IL343, interleukin 343; IL344, interleukin 344; IL345, interleukin 345; IL346, interleukin 346; IL347, interleukin 347; IL348, interleukin 348; IL349, interleukin 349; IL350, interleukin 350; IL351, interleukin 351; IL352, interleukin 352; IL353, interleukin 353; IL354, interleukin 354; IL355, interleukin 355; IL356, interleukin 356; IL357, interleukin 357; IL358, interleukin 358; IL359, interleukin 359; IL360, interleukin 360; IL361, interleukin 361; IL362, interleukin 362; IL363, interleukin 363; IL364, interleukin 364; IL365, interleukin 365; IL366, interleukin 366; IL367, interleukin 367; IL368, interleukin 368; IL369, interleukin 369; IL370, interleukin 370; IL371, interleukin 371; IL372, interleukin 372; IL373, interleukin 373; IL374, interleukin 374; IL375, interleukin 375; IL376, interleukin 376; IL377, interleukin 377; IL378, interleukin 378; IL379, interleukin 379; IL380, interleukin 380; IL381, interleukin 381; IL382, interleukin 382; IL383, interleukin 383; IL384, interleukin 384; IL385, interleukin 385; IL386, interleukin 386; IL387, interleukin 387; IL388, interleukin 388; IL389, interleukin 389; IL390, interleukin 390; IL391, interleukin 391; IL392, interleukin 392; IL393, interleukin 393; IL394, interleukin 394; IL395, interleukin 395; IL396, interleukin 396; IL397, interleukin 397; IL398, interleukin 398; IL399, interleukin 399; IL400, interleukin 400; IL401, interleukin 401; IL402, interleukin 402; IL403, interleukin 403; IL404, interleukin 404; IL405, interleukin 405; IL406, interleukin 406; IL407, interleukin 407; IL408, interleukin 408; IL409, interleukin 409; IL410, interleukin 410; IL411, interleukin 411; IL412, interleukin 412; IL413, interleukin 413; IL414, interleukin 414; IL415, interleukin 415; IL416, interleukin 416; IL417, interleukin 417; IL418, interleukin 418; IL419, interleukin 419; IL420, interleukin 420; IL421, interleukin 421; IL422, interleukin 422; IL423, interleukin 423; IL424, interleukin 424; IL425, interleukin 425; IL426, interleukin 426; IL427, interleukin 427; IL428, interleukin 428; IL429, interleukin 429; IL430, interleukin 430; IL431, interleukin 431; IL432, interleukin 432; IL433, interleukin 433; IL434, interleukin 434; IL435, interleukin 435; IL436, interleukin 436; IL437, interleukin 437; IL438, interleukin 438; IL439, interleukin 439; IL440, interleukin 440; IL441, interleukin 441; IL442, interleukin 442; IL443, interleukin 443; IL444, interleukin 444; IL445, interleukin 445; IL446, interleukin 446; IL447, interleukin 447; IL448, interleukin 448; IL449, interleukin 449; IL450, interleukin 450; IL451, interleukin 451; IL452, interleukin 452; IL453, interleukin 453; IL454, interleukin 454; IL455, interleukin 455; IL456, interleukin 456; IL457, interleukin 457; IL458, interleukin 458; IL459, interleukin 459; IL460, interleukin 460; IL461, interleukin 461; IL462, interleukin 462; IL463, interleukin 463; IL464, interleukin 464; IL465, interleukin 465; IL466, interleukin 466; IL467, interleukin 467; IL468, interleukin 468; IL469, interleukin 469; IL470, interleukin 470; IL471, interleukin 471; IL472, interleukin 472; IL473, interleukin 473; IL474, interleukin 474; IL475, interleukin 475; IL476, interleukin 476; IL477, interleukin 477; IL478, interleukin 478; IL479, interleukin 479; IL480, interleukin 480; IL481, interleukin 481; IL482, interleukin 482; IL483, interleukin 483; IL484, interleukin 484; IL485, interleukin 485; IL486, interleukin 486; IL487, interleukin 487; IL488, interleukin 488; IL489, interleukin 489; IL490, interleukin 490; IL491, interleukin 491; IL492, interleukin 492; IL493, interleukin 493; IL494, interleukin 494; IL495, interleukin 495; IL496, interleukin 496; IL497, interleukin 497; IL498, interleukin 498; IL499, interleukin 499; IL500, interleukin 500; IL501, interleukin 501; IL502, interleukin 502; IL503, interleukin 503; IL504, interleukin 504; IL505, interleukin 505; IL506, interleukin 506; IL507, interleukin 507; IL508, interleukin 508; IL509, interleukin 509; IL510, interleukin 510; IL511, interleukin 511; IL512, interleukin 512; IL513, interleukin 513; IL514, interleukin 514; IL515, interleukin 515; IL516, interleukin 516; IL517, interleukin 517; IL518, interleukin 518; IL519, interleukin 519; IL520, interleukin 520; IL521, interleukin 521; IL522, interleukin 522; IL523, interleukin 523; IL524, interleukin 524; IL525, interleukin 525; IL526, interleukin 526; IL527, interleukin 527; IL528, interleukin 528; IL529, interleukin 529; IL530, interleukin 530; IL531, interleukin 531; IL532, interleukin 532; IL533, interleukin 533; IL534, interleukin 534; IL535, interleukin 535; IL536, interleukin 536; IL537, interleukin 537; IL538, interleukin 538; IL539, interleukin 539; IL540, interleukin 540; IL541, interleukin 541; IL542, interleukin 542; IL543, interleukin 543; IL544, interleukin 544; IL545, interleukin 545; IL546, interleukin 546; IL547, interleukin 547; IL548, interleukin 548; IL549, interleukin 549; IL550, interleukin 550; IL551, interleukin 551; IL552, interleukin 552; IL553, interleukin 553; IL554, interleukin 554; IL555, interleukin 555; IL556, interleukin 556; IL557, interleukin 557; IL558, interleukin 558; IL559, interleukin 559; IL560, interleukin 560; IL561, interleukin 561; IL562, interleukin 562; IL563, interleukin 563; IL564, interleukin 564; IL565, interleukin 565; IL566, interleukin 566; IL567, interleukin 567; IL568, interleukin 568; IL569, interleukin 569; IL570, interleukin 570; IL571, interleukin 571; IL572, interleukin 572; IL573, interleukin 573; IL574, interleukin 574; IL575, interleukin 575; IL576, interleukin 576; IL577, interleukin 577; IL578, interleukin 578; IL579, interleukin 579; IL580, interleukin 580; IL581, interleukin 581; IL582, interleukin 582; IL583, interleukin 583; IL584, interleukin 584; IL585, interleukin 585; IL586, interleukin 586; IL587, interleukin 587; IL588, interleukin 588; IL589, interleukin 589; IL590, interleukin 590; IL591, interleukin 591; IL592, interleukin 592; IL593, interleukin 593; IL594, interleukin 594; IL595, interleukin 595; IL596, interleukin 596; IL597, interleukin 597; IL598, interleukin 598; IL599, interleukin 599; IL600, interleukin 600; IL601, interleukin 601; IL602, interleukin 602; IL603, interleukin 603; IL604, interleukin 604; IL605, interleukin 605; IL606, interleukin 606; IL607, interleukin 607; IL608, interleukin 608; IL609, interleukin 609; IL610, interleukin 610; IL611, interleukin 611; IL612, interleukin 612; IL613, interleukin 613; IL614, interleukin 614; IL615, interleukin 615; IL616, interleukin 616; IL617, interleukin 617; IL618, interleukin 618; IL619, interleukin 619; IL620, interleukin 620; IL621, interleukin 621; IL622, interleukin 622; IL623, interleukin 623; IL624, interleukin 624; IL625, interleukin 625; IL626, interleukin 626; IL627, interleukin 627; IL628, interleukin 628; IL629, interleukin 629; IL630, interleukin 630; IL631, interleukin 631; IL632, interleukin 632; IL633, interleukin 633; IL634, interleukin 634; IL635, interleukin 635; IL636, interleukin 636; IL637, interleukin 637; IL638, interleukin 638; IL639, interleukin 639; IL640, interleukin 640; IL641, interleukin 641; IL642, interleukin 642; IL643, interleukin 643; IL644, interleukin 644; IL645, interleukin 645; IL646, interleukin 646; IL647, interleukin 647; IL648, interleukin 648; IL649, interleukin 649; IL650, interleukin 650; IL651, interleukin 651; IL652, interleukin 652; IL653, interleukin 653; IL654, interleukin 654; IL655, interleukin 655; IL656, interleukin 656; IL657, interleukin 657; IL658, interleukin 658; IL659, interleukin 659; IL660, interleukin 660; IL661, interleukin 661; IL662, interleukin 662; IL663, interleukin 663; IL664, interleukin 664; IL665, interleukin 665; IL666, interleukin 666; IL667, interleukin 667; IL668, interleukin 668; IL669, interleukin 669; IL670, interleukin 670; IL671, interleukin 671; IL672, interleukin 672; IL673, interleukin 673; IL674, interleukin 674; IL675, interleukin 675; IL676, interleukin 676; IL677, interleukin 677; IL678, interleukin 678; IL679, interleukin 679; IL680, interleukin 680; IL681, interleukin 681; IL682, interleukin 682; IL683, interleukin 683; IL684, interleukin 684; IL685, interleukin 685; IL686, interleukin 686; IL687, interleukin 687; IL688, interleukin 688; IL689, interleukin 689; IL690, interleukin 690; IL691, interleukin 691; IL692, interleukin 692; IL693, interleukin 693; IL694, interleukin 694; IL695, interleukin 695; IL696, interleukin 696; IL697, interleukin 697; IL698, interleukin 698; IL699, interleukin 699; IL700, interleukin 700; IL701, interleukin 701; IL702, interleukin 702; IL703, interleukin 703; IL704, interleukin 704; IL705, interleukin 705; IL706, interleukin 706; IL707, interleukin 707; IL708, interleukin 708; IL709, interleukin 709; IL710, interleukin 710; IL711, interleukin 711; IL712, interleukin 712; IL713, interleukin 713; IL714, interleukin 714; IL715, interleukin 715; IL716, interleukin 716; IL717, interleukin 717; IL718, interleukin 718; IL719, interleukin 719; IL720, interleukin 720; IL721, interleukin 721; IL722, interleukin 722; IL723, interleukin 723; IL724, interleukin 724; IL725, interleukin 725; IL726, interleukin 726; IL727, interleukin 727; IL728, interleukin 728; IL729, interleukin 729; IL730, interleukin 730; IL731, interleukin 731; IL732, interleukin 732; IL733, interleukin 733; IL734, interleukin 734; IL735, interleukin 735; IL736, interleukin 736; IL737, interleukin 737; IL738, interleukin 738; IL739, interleukin 739; IL740, interleukin 740; IL741, interleukin 741; IL742, interleukin 742; IL743, interleukin 743; IL744, interleukin 744; IL745, interleukin 745; IL746, interleukin 746; IL747, interleukin 747; IL748, interleukin 748; IL749, interleukin 749; IL750, interleukin 750; IL751, interleukin 751; IL752, interleukin 752; IL753, interleukin 753; IL754, interleukin 754; IL755, interleukin 755; IL756, interleukin 756; IL757, interleukin 757; IL758, interleukin 758; IL759, interleukin 759; IL760, interleukin 760; IL761, interleukin 761; IL762, interleukin 762; IL763, interleukin 763; IL764, interleukin 764; IL765, interleukin 765; IL766, interleukin 766; IL767, interleukin 767; IL768, interleukin 768; IL769, interleukin 769; IL770, interleukin 770; IL771, interleukin 771; IL772, interleukin 772; IL773, interleukin 773; IL774, interleukin 774; IL775, interleukin 775; IL776, interleukin 776; IL777, interleukin 777; IL778, interleukin 778; IL779, interleukin 779; IL780, interleukin 780; IL781, interleukin 781; IL782, interleukin 782; IL783, interleukin 783; IL784, interleukin 784; IL785, interleukin 785; IL786, interleukin 786; IL787, interleukin 787; IL788, interleukin 788; IL789, interleukin 789; IL790, interleukin 790; IL791, interleukin 791; IL792, interleukin 792; IL793, interleukin 793; IL794, interleukin 794; IL795, interleukin 795; IL796, interleukin 796; IL797, interleukin 797; IL798, interleukin 798; IL799, interleukin 799; IL800, interleukin 800; IL801, interleukin 801; IL802, interleukin 802; IL803, interleukin 803; IL804, interleukin 804; IL805, interleukin 805; IL806, interleukin 806; IL807, interleukin 807; IL808, interleukin 808; IL809, interleukin 809; IL810, interleukin 810; IL811, interleukin 811; IL812, interleukin 812; IL813, interleukin 813; IL814, interleukin 814; IL815, interleukin 815; IL816, interleukin 816; IL817, interleukin 817; IL818, interleukin 818; IL819, interleukin 819; IL820, interleukin 820; IL821, interleukin 821; IL822, interleukin 822; IL823, interleukin 823; IL824, interleukin 824; IL825, interleukin 825; IL826, interleukin 826; IL827, interleukin 827; IL828, interleukin 828; IL829, interleukin 829; IL830, interleukin 830; IL831, interleukin 831; IL832, interleukin 832; IL833, interleukin 833; IL834, interleukin 834; IL835, interleukin 835; IL836, interleukin 836; IL837, interleukin 837; IL838, interleukin 838; IL839, interleukin 839; IL840, interleukin 840; IL841, interleukin 841; IL842, interleukin 842; IL843, interleukin 843; IL844, interleukin 844; IL845, interleukin 845; IL846, interleukin 846; IL847, interleukin 847; IL848, interleukin 848; IL849, interleukin 849; IL850, interleukin 850; IL851, interleukin 851; IL852, interleukin 852; IL853, interleukin 853; IL854, interleukin 854; IL855, interleukin 855; IL856, interleukin 856; IL857, interleukin 857; IL858, interleukin 858; IL859, interleukin 859; IL860, interleukin 860; IL861, interleukin 861; IL862, interleukin 862; IL863, interleukin 863; IL864, interleukin 864; IL865, interleukin 865; IL866, interleukin 866; IL867, interleukin 867; IL868, interleukin 868; IL869, interleukin 869; IL870, interleukin 870; IL871, interleukin 871; IL872, interleukin 872; IL873, interleukin 873; IL874, interleukin 874; IL875, interleukin 875; IL876, interleukin 876; IL877, interleukin 877; IL878, interleukin 878; IL879, interleukin 879; IL880, interleukin 880; IL881, interleukin 881; IL882, interleukin 882; IL883, interleukin 883; IL884, interleukin 884; IL885, interleukin 885; IL886, interleukin 886; IL887,

causes, which often lack these features.⁷ In future, we predict that unbiased surveys in patients with encephalitis will show that the growing range of autoimmune causes significantly exceed those of infectious causes in developed countries.

Distinctive clinical manifestations of individual autoimmune encephalitides

While the clinical features of these disorders span the spectrum of neurological symptomatology, for patients with autoantibodies against any individual target there is often a characteristic set of core phenotypic manifestations, which may relate to the regional expression, function and relative susceptibility of the target protein. Table 1 summarises the most common such syndromes on a 'per target' basis.

By way of generalisation, autoantibody-mediated disorders often present rapidly, over a few days to weeks. However, we have observed more chronic courses, of between 1 and 5 years, particularly in leucine-rich glioma-inactivated protein 1 (LG1)-antibody, contact-associated protein 2 (CASPR2)-antibody and immunoglobulin-like cell-adhesion molecule 5 (IgLON5)-antibody syndromes. These findings mean that time to disease nadir is often outside of the 3-month duration which appears in diagnostic guidelines.⁸ In our clinical experience, these more insidious courses—which are sometimes more akin to neurodegenerative presentations than florid encephalitis syndromes—often lead to a delayed diagnosis, and hence late commencement of immunotherapy. In patients with more acute-onset, dramatic presentations the diagnosis tends to be considered early but immunotherapy may still be delayed while excluding differentials and awaiting autoantibody test results. While tumours, prion disease and metabolic disorders are often in the differential diagnosis, a pragmatic trial of immunotherapy may only be absolutely contraindicated in the setting of some infections. Yet, observational data show that corticosteroids may be beneficial in some forms of herpes simplex virus (HSV) encephalitis, suggesting this may not be a universal contraindication.⁹

To encourage earlier immunotherapy administration to these patients, we have set out below some 'identifying' clinical findings that we find valuable in everyday autoimmune neurology practice (figure 1). Some features are so characteristic of certain antibody syndromes that they serve as essentially pathognomonic clues to the underlying autoantibody. Later, we describe the dominant presenting features, and relate these to individual syndromes.

Psychiatric/behavioural

Psychiatric symptoms such as aggression, irritability, mood lability, hallucinations and marked disturbance in sleep/wake cycles may occur in many of these patients across the spectrum of autoimmune encephalitis,

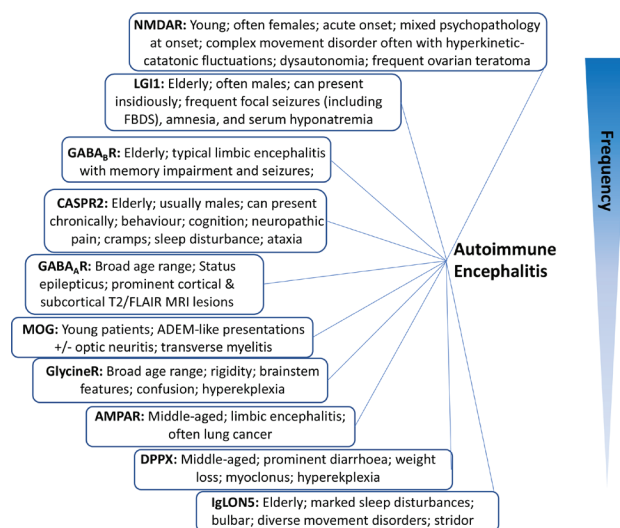


Figure 1 Classic syndromes and characteristic features of neuronal autoantibodies. Listed in an estimated order of descending frequency. AMPAR, α -amino-3-hydroxy-5-methyl-4-isoxazolepropionic acid receptor; CASPR2, contact-associated protein 2; DPPX, dipeptidyl peptidase-like protein 6; GABA_AR, gamma aminobutyric acid; IgLON5, immunoglobulin-like cell-adhesion molecule 5; LGI1, leucine-rich glioma inactivated protein 1; NMDAR, N-methyl-D-aspartate receptor; MOG, myelin-oligodendrocyte glycoprotein.

and are especially notable in NMDAR-antibody and α -amino-3-hydroxy-5-methyl-4-isoxazolepropionic acid receptor-antibody syndromes.

In adult-onset NMDAR-antibody encephalitis, psychiatric features are typically the presenting complaint, with patients often needing mental health assessments before a neurology consultation. In our experience, relatively isolated psychiatric features occur in these patients only at disease onset. Subsequently, within a few days, they are rapidly accompanied by more traditional neurological abnormalities including delirium, amnesia and seizures. Nevertheless, careful consideration of the psychopathology can help in differentiating NMDAR-antibody encephalitis from primary psychiatric disease. NMDAR-antibody encephalitis often presents with a complex phenotype spanning classically distinct psychiatric diagnostic categories, including domains of mood, psychosis, behaviour and catatonia, the latter also seen with gamma aminobutyric acid A receptors (GABA_AR)-antibodies.¹⁰ By contrast, early 'transdiagnostic' presentations are unusual in most primary psychiatric diseases. Overall, the complex psychiatric phenotype at onset combined with polysymptomatic neurological disease and a polymorphic movement disorder, discussed in detail later, creates a multifaceted presentation highly characteristic of NMDAR-antibody encephalitis. These features contrast markedly to the poorly circumscribed clinical syndrome of neuropsychiatric systemic lupus erythematosus, in which NMDAR-antibodies have also been reported. However, by contrast to antibodies which target native neuronal surface epitopes, those from patients with neuropsychiatric systemic lupus erythematosus have been found to

show intrinsic 'stickiness', which is not NMDAR-specific, and hence have limited diagnostic value.¹¹

Cognition

In the acute phase, many patients with encephalitis show disorientation, confusion, confabulation and amnesia, features that may relate to the dense expression of many autoantigens in limbic structures, particularly the hippocampus. Patients with LGI1-antibody and NMDAR-antibody syndromes, and other forms of limbic encephalitis, often experience a dense amnesia for the period of acute hospitalisation, especially the nadir of their disease. Some patients and relatives consider this fortuitous due to several, inevitably distressing, events typical of their hospital stays. In LGI1-antibody encephalitis, the amnesia characteristically affects both anterograde memories plus a loss of autobiographical retrograde epochs.^{12 13} Comparative neuropsychological analyses are pending in the other forms of autoimmune encephalitis.

Seizures

Seizures occur in most autoimmune encephalitis syndromes and are a common factor that triggers neurological attention. The types and frequencies of seizure vary between autoantibody-mediated diseases and may help pinpoint the individual autoantibody.

In LGI1-antibody encephalitis, the seizure profile is especially well-characterised. These patients, typically men in their fifth to eighth decades, have very frequent focal events with multiple semiologies and only rare generalised seizures. The pathognomonic faciobrachial dystonic seizures are frequent, brief events with posturing of the ipsilateral face and arm that often occur hundreds of times per day.^{14 15} Also, the leg may be involved and the sudden leg spasms often precipitate falls. In addition, patients with LGI1-antibodies may have short-lived, and again frequent, piloerection seizures and experience paroxysmal dizziness spells.¹⁶ From our experience, paroxysmal dizziness spells are likely ictal events characterised by frequent, intense episodic dizziness without vertigo or electroencephalographic correlates. In these patients, other focal seizure semiologies include more classical temporal lobe events, with rising epigastric phenomenon, sudden onset fear or panic, and déjà-vu or jamais-vu. As many of these are very short lived, they may be subtle and their detection often requires direct questioning of patients and relatives.

Although not as well-characterised as the seizures associated with LGI1-antibodies, CASPR2-antibody encephalitis is also associated with frequent focal seizures and rare generalised seizures.¹⁶ However, we have not observed faciobrachial dystonic seizures and paroxysmal dizziness spells in the CASPR2-antibody patients, whose seizure semiology awaits further characterisation.

Myelin oligodendrocyte glycoprotein (MOG) antibodies are associated with relapsing syndromes

involving brainstem or cortical encephalitis, sometimes with optic neuritis and transverse myelitis, which particularly involve children and young adults. Seizures may present as the index event and the syndrome can evolve to a more diffuse encephalitis, including one which radiologically mimics classical acute disseminated encephalomyelitis. Patients typically respond well to corticosteroid therapies, although the duration of their administration remains controversial as relapses are common.^{17–19} This presentation is rare; in our practice, we have seen one case of MOG-antibody related encephalitis alongside >200 other patients with autoimmune encephalitis.

Status epilepticus may occur in autoimmune encephalitis and is most frequent in patients with antibodies to the GABA_AR/GABA_BR. Patients with GABA_AR-antibody encephalitis frequently have distinctive neuroimaging with cortical and subcortical T2/FLAIR signal on MRI affecting two or more brain regions.^{20 21} In our experience, these multiple 'fluffy' lesions appear to be a characteristic feature; their presence consistently associated with GABA_AR-antibody positivity. Patients with GABA_BR-antibodies are typically in around their sixth decade of life and commonly present with an acute limbic encephalitis. More rarely, they have a prolonged time course, characterised as a rapidly progressive dementia.²² Detection of GABA_BR-antibodies should prompt a search for malignancy, with tumours in ~50% of patients (most commonly small cell lung cancer).

Although patients with NMDAR-antibody encephalitis often have few seizures, it is sometimes an ictal event that prompts consideration of diagnoses outside the realm of primary psychiatric disease.

One important question is whether testing these autoantibodies benefits a broader population of people with epilepsy. To date, studies have yielded highly divergent positivity rates for autoantibodies in a variety of patients with seizures. However, only recently have studies combined accurate clinical phenotyping with the autoantibody results in unselected populations.^{23 24} These largely concur with our routine clinical experience: patients who have unselected new-onset seizures, neuronal surface autoantibodies and an immunotherapy-responsive syndrome typically have mild features of autoimmune encephalitis, such as cognitive and mood features, specific seizure semiologies, dysautonomia and limbic MRI changes. This clinically-driven assessment approach aims to limit unfruitful or equivocal immunotherapy trials in patients attending epilepsy clinics.

Movement disorders

The autoimmune encephalitis syndromes may show a diverse spectrum of movement disorder phenomenologies. In keeping with the complex nature of NMDAR-antibody encephalitis, the associated movement disorder is typically polymorphic, defying

classification into classical movement disorder taxonomies.^{25 26} Most characteristically, patients have combinations of chorea, stereotypies and dystonia, with limited tremor, which affect all limbs and—most characteristically—the face and mouth.

Encephalitis syndromes associated with both glycine receptor (GlyR) and dipeptidyl peptidase-like protein 6 (DPPX) antibodies are characterised by hyperekplexia and myoclonus;^{27 28} however, accompanying features, such as marked rigidity and falls in GlyR-antibody encephalitis and prominent diarrhoea in DPPX-antibody encephalitis, can usually differentiate these entities. Although not typically associated with a movement disorder, chorea is rare in LGI1-antibody encephalitis.²⁹

Gait disturbances are frequent in CASPR2- and IgLON5-antibody syndromes.^{30–32} IgLON5-antibody disease is associated with a polymorphic sleep disturbance plus progressive supranuclear palsy-like picture with axial rigidity and gait freezing, whereas CASPR2-antibody disease typically has a gait disturbance secondary to episodic or persistent ataxia. Indeed, ataxia helps to differentiate CASPR2- from LGI1-antibody syndromes but, as with psychiatric features and seizures, is rarely the sole clinical manifestation.

Dysautonomia

Dysautonomia is a common feature to many of these disorders. These symptoms are typically progressive through the initial disease course and can be life-threatening, requiring close monitoring. Particularly in NMDAR-antibody encephalitis, wide fluctuations in blood pressure and tachy-arrhythmias or brady-arrhythmias are key features that often prompt us to consult with colleagues in intensive care and cardiology. Occasionally, temporary pacing is appropriate. Other autonomic involvement includes orthostatic hypotension, constipation and abnormal sudomotor function.

Pain

In our experience, pain is under-recognised in the autoimmune encephalitis syndromes particularly in patients with autoantibodies to CASPR2. In this disease, ~60% of patients report pain.^{16 30} It can occur in the context of a peripheral nerve hyperexcitability syndrome (neuromyotonia, fasciculations, cramps and myokymia) but—more commonly—develops without peripheral motor nerve involvement (Ramanathan, Uy, Bennett and Irani, in revisions). Pain is also less common with LGI1-antibodies.^{16 33} In addition, patients with GlyR-antibodies often complain of allodynia, dysaesthesia and prominent pruritus.²⁸ In all these groups, our experience is that pain may respond partially to immunotherapy but often persists. This area merits more detailed future studies.

DIFFERENTIAL DIAGNOSES

Clinicians need to consider a broad differential diagnosis to reflect the spectrum of neurological phenomenology in autoimmune encephalitis. Here we outline a few considerations that apply in each of several clinical situations.

- ▶ Infectious encephalitis (most commonly HSV): often presents with seizures as well as fever, focal neurology and more extensive imaging changes than in autoimmune encephalitis.
- ▶ Temporal lobe glioma in cases with mesial temporal swelling: semiologies can overlap but autoimmune encephalitis usually has a less abrupt onset and interval imaging swelling on imaging typically resolves with treatment on interval imaging.
- ▶ Creutzfeldt-Jakob disease and other rapid dementias: often remain a differential in more chronic cases, especially patients with LGI1-antibodies. However, in practice, the differences in clinical features, CSF and imaging mean that distinguishing these is usually straightforward.
- ▶ Post-ictal MRI changes in patients with frequent seizures can often mimic autoimmune encephalitis in the acute phase.
- ▶ Metabolic encephalopathies: usually delirium dominates the clinical picture.
- ▶ Hashimoto's encephalopathy: fundamentally a difficult diagnosis to make as definitions remain unclear. New autoantibody discoveries may better describe many cases once termed 'Hashimoto's'.³⁴

CLINICAL MANAGEMENT

Symptomatic considerations

In addition to treatment of the underlying immunological process, it is often necessary to consider management of seizures, movement disorders, behaviour, pain, sleep and autonomic disturbance, and mood disorders. We do not discuss this substantial topic comprehensively here but rather we focus on special considerations relevant to the two most common forms of autoimmune encephalitis: NMDAR-antibody and LGI1-antibody encephalitis.

The overlap in clinical features between NMDAR-antibody encephalitis and neuroleptic malignant syndrome has led some to hypothesise that patients with NMDAR-antibody encephalitis have hypersensitivity to neuroleptic agents, with an increased risk of developing neuroleptic malignant syndrome.^{35–38} Hence, we judiciously use antipsychotic medications for behavioural symptom management, injury prevention and to facilitate care, often once daily olanzapine 10 mg. Alternatively, we find benzodiazepines are effective, although often at high doses (sometimes up to 180 mg/day of diazepam), for treating both behavioural symptoms and some dyskinesias.³⁹ We frequently liaise closely with neuropsychiatry colleagues to manage behavioural features.

As discussed earlier, seizures are a common presenting feature among the autoimmune encephalitis

syndromes. However, from 103 patients with LGI1-antibody encephalitis, antiseizure medications alone stopped faciobrachial dystonic seizures in only 10%. By contrast, faciobrachial dystonic seizures stopped within 30 days of starting immunotherapy in 51%, rising to 88% by 90 days.⁴⁰ The same principle appears increasingly true for seizures associated with multiple forms of autoimmune encephalitis.⁴¹ Thus, it is imperative for appropriate and timely treatment to recognise an underlying autoimmune encephalitis syndrome. Furthermore, patients with LGI1-antibody disease are at higher risk of cutaneous reactions and Stevens-Johnson syndrome with antiseizure medications. Therefore, not only is antiseizure medication use likely to be ineffective but may also result in iatrogenic adverse events. Whenever possible, we prioritise optimisation of immunotherapy in these patients and increasingly reserve antiseizure medications only for generalised convulsions or instances where the seizure semiology is likely to cause injury.

After improvements on immunotherapy, discussed later, patients often ask about the risk of ongoing seizures. Indeed, epilepsy is defined as a tendency to enduring seizures. So, it is of interest that few patients in recent autoimmune encephalitis cohorts developed epilepsy after the acute illness.^{41 42} This observation suggests lifelong antiseizure therapy may not be necessary in many cases. In seizure-free patients keen to stop antiseizure medications, we discuss a trial of weaning including the possible complications of long-term antiseizure medications (eg, osteoporosis, patient choice) and implications for driving.

Early immunotherapy improves outcomes

The importance of early recognition and diagnosis in autoimmune encephalitis is paramount to the ultimate goal of optimal immunotherapy. Although there are no specific data available for all autoantibody-mediated encephalitis syndromes, the two most common forms of autoimmune encephalitis are clear exemplars where improved patient outcomes associate with early immunotherapy. In LGI1-antibody encephalitis, ~80% of patients noticed that faciobrachial dystonic seizures typically precede onset of marked cognitive impairment. Given that immunotherapy is more effective than antiseizure medications in treating LGI1-antibody-associated seizures, early treatment with immunotherapy has shown great promise for preventing otherwise incipient cognitive impairment and functional disability.⁴⁰ In NMDAR-antibody encephalitis, early treatment independently predicted good outcome (modified Rankin score <2) whereas delays in immunotherapy of >4 weeks were associated with poor functional outcomes at 1 year.^{43 44}

In NMDAR-antibody encephalitis, teratoma removal is a key step in both acute treatment and relapse prevention.⁴³ It is considered of equivalent efficacy to other individual first-line immunotherapies, likely

because the teratoma is a germinal centre harbouring NMDAR-reactive B cells.⁴⁵ Men and children tend to have non-paraneoplastic disease. Half of adult female patients are diagnosed with ovarian teratomas. So, especially in these cases, pelvic imaging should be performed, and small or equivocal findings carefully followed up and investigated thoroughly. Repeat serial imaging may be considered in cases where a teratoma is suspected and a clinical relapse should certainly prompt re-investigation. We are familiar with patients in whom the teratoma has been radiologically (mis-) interpreted as a luteal or haemorrhagic cyst. However, overall, most patients do not have a detectable teratoma, meaning that in all cases immunotherapy should not be delayed. Also, in our experiences, empirical oophorectomy is low yield for a microscopic teratoma.

There are several options for acute and long-term immunotherapies in both the inpatient and outpatient settings (table 2). Initial inpatient therapy often involves corticosteroids, intravenous immunoglobulins and/or plasma exchange. While awaiting autoantibody results, we start first-line immunotherapy when we are clinically confident of the diagnosis. Second-line therapies include rituximab, cyclophosphamide and other corticosteroid-sparing agents. Choice of initial therapy should balance the risk profile of the intervention and the severity/trajectory of the individual patient's disease course.

In our experience, intravenous corticosteroids are generically highly effective agents, so relative contraindications (eg, pre-existing diabetes or psychiatric diseases) are often carefully managed in the acute phase but rarely considered absolute contraindications. We also find plasma exchange to be very effective, often used if patients show a limited or inadequate response to corticosteroids, or for patients with a rapid deterioration whose trajectory may otherwise be intensive care unit admission. While intravenous immunoglobulin is the only immunotherapy with randomised data to support its use,⁴⁶ in practice it appears the least effective of the three conventional first-line interventions. This observation is supported by the minimal effect size observed in this inaugural randomised control trial.

Below, we discuss our more specific management approaches to the two most common autoantibody-mediated syndromes.

NMDAR-antibody encephalitis

Due to its associated high-morbidity and mortality, potential for months of hospitalisation and high rate of relapses, we favour early aggressive therapy in patients with NMDAR-antibody encephalitis. Teratoma removal and first-line immunotherapies are routine interventions: typically, 3–5 days of 1 g intravenous methylprednisolone daily, plus plasma exchange. Second-line immunotherapies reduce the relapse risk and, from our clinical observations, expedite recoveries

Table 2 Immunotherapeutic options for treatment of autoimmune encephalitis

Immunotherapy	Mechanism of action	Dose/regimen	Monitoring/prophylactic adjunctive therapies	Side-effects
First-line therapy				
Corticosteroids	Multiple: largely via attenuation of immune response via genomic and non-genomic effects.	Methylprednisolone 1 g intravenous daily×3–5 days. +/- Oral prednisone 1 mg/kg/day. Slow steroid taper.	Clinical monitoring for steroids side effects. Calcium, vitamin D±bisphosphonate therapy. Proton pump inhibitor for long steroid tapers. When in combination with other immunotherapy, consider prophylaxis for <i>Pneumocystis jirovecii</i> .	Sleep disruption, irritability, osteoporosis, weight gain, hypertension, hyperglycaemia, increased intraocular pressures, upper gastrointestinal bleeding, skin thinning/bruising/ striae, reactivation of chronic infection, suppression of endogenous steroid production,. Rare complications include: avascular necrosis of jaw or hip, <i>P. jirovecii</i> pneumonia.
Intravenous immunoglobulin (IVIg)	Very wide to include modulation of T/B-cells, cytokines and innate pathways. Blockade of variable domain of causative antibodies by anti-idiotypic antibodies.	2 g/kg intravenous divided over 3–5 days.	Clinical monitoring for allergic reactions, transfusion reactions, aseptic meningitis.	Transfusion reactions (most mild), rare complications include aseptic meningitis, anaphylaxis, acute renal failure, haemolytic anaemia and thromboembolism.
Plasmapheresis	Bulk removal of circulating immunoglobulins. Rebound state may increase susceptibility of circulating antibody-secreting cells and precursors to cytotoxic therapies (ie, cyclophosphamide).	3–5 sessions over 5–10 days.	Clinical monitoring for hypotension, catheter-related complications (thrombosis, infection, air embolism) and anaphylaxis. Monitoring for electrolyte abnormalities throughout.	Mortality 3–5 per 10 000, hypocalcaemia, hypokalaemia, metabolic alkalosis, hypotension, catheter-related complications (thrombosis, infection, air embolism), anaphylaxis, TRALI and rare viral transmission
Second-line therapy				
Mycophenolate	Active metabolite (mycophenolic acid) inhibits inosine-5'-monophosphate dehydrogenase, depletes guanosine nucleotides preferentially in T and B lymphocytes.	Initially 500 mg two times a day, targeting to 1–1.5 g two times a day maintenance.	Before starting: screening for latent HBV, HCV. CBC-D weekly×1 month, q2weeks×2 months→monthly. Electrolytes, Cr/GFR, ALT, AST, ALP, GGT, bilirubin, albumin, INR monthly.	Increased infection risk including reactivation of viral infections (herpes simplex/zoster, polyomavirus (BK virus) associated nephropathy (PVAN), PML and CMV viraemia), increased risk of lymphoma and skin malignancy, cytopenias.
Azathioprine	Inhibition of purine synthesis via active metabolites 6-mercaptopurine and 6-thioguanine.	Initial 50 mg daily, increase by 50 mg increments q1-2 weeks until 2 to 3 mg/kg/day maintenance.	CBC-D weekly×1 month, q2 weeks×2 months→monthly. ALT, AST, GGT, ALP, bilirubin, albumin, INR q3months. Age-related cancer screening and skin checks. Consider testing for thiopurine S-methyltransferase (TMPT) deficiency before initiation.	GI toxicity, dose-related cytopenias, hepatotoxicity, increased infection rates, increased risk of malignancy (including the rare entity hepatosplenic T-cell lymphoma (HSTCL), PML.

Continued

Table 2 Continued

Immunotherapy	Mechanism of action	Dose/regimen	Monitoring/prophylactic adjunctive therapies	Side-effects
Rituximab	Monoclonal antibody against CD20: principally B cell depletion.	Induction: 375 mg/m ² intravenous weekly×4 weeks or 500 mg intravenous×2 doses separated by 2 weeks.	Preinitiation: CBC+diffrential, ALT, AST, LDH, bilirubin, electrolytes, creatinine, screening for latent HBV, HCV, syphilis, HIV, and TB. Monthly postinfusion bloodwork (starting 1-week post-induction): CBC-D, ALT, AST, LDH, bilirubin, electrolytes, Cr.	Mild transfusion-related reactions (headache, fever, chills, nausea), hypotension, anaphylaxis (rare), reactivation of latent infection (TB, hepatitis B).
Cyclophosphamide	Induction of DNA cross-linking and apoptosis by active metabolite (phosphoramide mustard).	750 mg/m ² intravenous monthly for 3–6 months.	CBC, HIV, HBV, HCV, VZV, liver enzymes, electrolytes, creatinine+urinalysis weekly for the first 4 weeks, then q 2 weekly for next 2 months→monthly.	Cytopenias (neutropenia most common), nausea/vomiting, diarrhoea, hair loss, mucocutaneous ulceration, haemorrhagic cystitis, infertility, teratogenicity.
Third-line/experimental				
Tocilizumab	Monoclonal antibody against IL-6, blocking binding to IL-6 receptor and preventing IL-6 mediated inflammatory cascade.	Initial: 4 mg/kg intravenous infusion. May increase to 8 mg/kg based on response.	Preinitiation screening for TB. Clinical monitoring for infection. Regular monitoring of blood counts, liver profile and lipids.	Fever response and CRP elevation may be blunted by impairment in IL-6 receptor signalling. Hepatotoxicity, cytopenias, blood lipid abnormalities, immunosuppression.
Bortezomib	Small-molecule proteasome inhibitor. Relatively selective depletion of plasma cells due to high immunoglobulin synthesis rate.			Peripheral neuropathy, myalgia, diarrhoea

Sources: Sun *et al*, Shin *et al*,^{2 62 63} Joint Formulary Committee.

ALP, alkaline phosphatase; ALT, alanine transaminase; AST, aspartate transaminase; CBC-D, complete blood count with differential; CD, cluster of differentiation; Cr, creatinine; CRP, C reactive protein; GFR, glomerular filtration rate; GGT, gamma-glutamyltransferase; HBV/HCV, hepatitis B/C virus; HIV, human immunodeficiency virus; HTLV, human T-lymphotropic virus; IL, interleukin; TB, tuberculosis; TRALI, transfusion associated lung injury.

and time to discharge.⁴³ Our threshold to escalate to second-line therapy is increasingly low, with >70% of our patients receiving cyclophosphamide or rituximab if awareness and behaviour have not improved within 2 weeks. As outpatients, we tend not to employ a prolonged course of oral corticosteroids, especially if second-line therapy or tumour removal appears to be having the desired effect. This approach appears to associate with a <5% rate of relapses, to date. If second-line immunotherapy is not administered during initial episode, it should be strongly considered in relapses.

LGI1-antibody encephalitis

For this condition, we favour first-line treatment with high-dose intravenous or oral corticosteroids. We have an increasingly low threshold for plasma exchange at disease onset, particularly in patients with greater degrees of impairment. In our experience, oral prednisolone should be maintained for around 24–36 months, as shorter durations of corticosteroids are often associated with relapses.¹⁴ We typically taper oral prednisolone from 50 to 60 mg for the first 2–4 months to around 20–30 mg by 12 months, with a slow taper thereafter. In elderly patients, this approach does inevitably induce some glucocorticoid side effects that need to be carefully considered. However, in our experience, despite corticosteroid-sparing agents (mainly mycophenolate mofetil) more rapid steroid tapers tend to result in relapse. A few patients who require cyclophosphamide show variable outcomes. By contrast, rituximab appears more effective but longer-term follow-up is awaited.

MOLECULAR DISCOVERIES PROVIDE CLINICAL INSIGHTS

The ability to detect CNS-directed autoantibodies that target the extracellular domains of neuroglial proteins has revolutionised our ability to diagnose and classify this nascent group of autoantibody-mediated disorders. The confident detection of a causative autoantibody has implications for the treatment regimen and may help focus a search for associated malignancies or surveillance for associated complications. Moreover, an understanding of the basic immunobiology helps to appreciate nuances around diagnostic testing, suspected mechanisms of pathogenesis and offer a rationale for administration of therapies. As these diseases are associated with pathogenic autoantibodies, a focus on the B cell immunobiology may be the key to understanding autoimmune encephalitis. A full discussion of the underlying immunopathology is beyond the scope of this review and have been described elsewhere.² Here, we discuss select concepts with the greatest clinical relevance.

Therapeutic insights

Autoantigen-specific B cells are probably first established peripherally before migrating into the CNS, as

the pathogenic neuronal autoantibodies typically have ~50-fold higher concentrations in the serum than in CSF.² Interestingly, this ratio holds true for patients in whom an infectious encephalitis (HSV encephalitis) is followed by an autoimmune form (NMDAR-antibody encephalitis). Therefore, even with a brain-specific trigger, the autoimmunity probably begins outside the CNS. Hence, the peripheral B cells that carry these self-reactivities need to evade tolerance checkpoints, a potential avenue for therapeutic interventions. Also, the B lineage cells that secrete these autoantibodies in the periphery are themselves a key therapeutic target. For example, studies that implicate CD20⁺ long lived plasma cells as dominant producers of autoantibodies imply drugs such as bortezomib—by acting on the proteasome, which is especially active in plasma cells—may be effective treatments.⁴⁷ Alternatively, emerging evidence suggests autoantibodies secreted by CD20⁺ B cells that have undergone recent germinal centre reactions may be a key source of these autoantibodies^{45 48}: if this mechanism were dominant, rituximab administration might logically prove to be an especially effective option.

A key factor in generating the mature antigen-specific B cells is their interaction with antigen-specific T cells. This occurs via the engagement of human leucocyte antigen (HLA) with the T-cell receptor. Hence, it remains of biological interest that >90% of patients with LGI1-antibodies carry the HLA-DRB1*07:01 allele, and that ~70% of the patients with CNS diseases and CASPR2-antibodies carry the HLA-DRB1*11:01 allele.⁴⁹ T-cell directed therapies may be a future avenue for treatment in these patients. In addition, these findings may be of value in clinical practice: we have found the absence of these alleles as a useful adjunctive investigation to identify the few patients with LGI1-antibodies or CASPR2-antibodies who do not have an immunotherapy-responsive syndrome. Hence, genetic testing may become a reflexive test in these conditions.

After B cell autoreactivities originate in the periphery, autoantibody access to the CNS is likely to play a major role in pathogenesis. Of course, fundamentally, the autoantibodies must gain access to the brain. But it remains poorly addressed as to whether they cross the blood–brain barrier as soluble immunoglobulins or are predominantly secreted by intrathecal B cells that have crossed the blood–brain barrier. In beginning to address this, recent studies show these patients have an enrichment of autoantigen-reactive B cells in the CSF, providing direct evidence of intrathecal autoantibody production.^{50 51} Hence, drugs that prevent lymphocyte transmigration into the CNS may yet be effective agents in these disorders.

Diagnostics insights

In addition, the biology around roles of peripheral and central compartments also has implications for

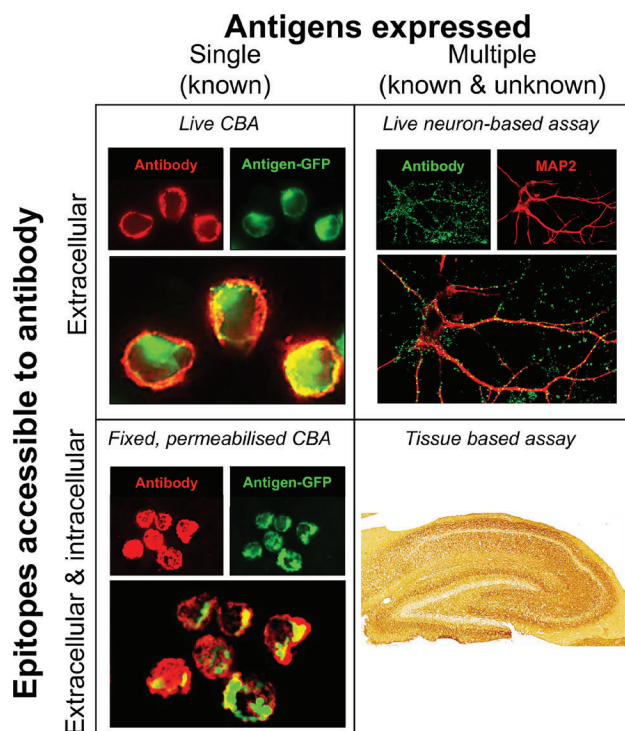


Figure 2 Neuronal surface antibody detection methods. Current research and diagnostic methods expose the test sample to neuronal antigens which differ in the properties of the antigens. Cell-based assays aim largely to expose a single known antigen, by its expression in mammalian cells. Conversely, neurone-based assays and tissue-based assays expose multiple endogenous antigens, both those known to be targets of pathogenic antibodies and as yet unknown antigens. Additionally, the assays vary on whether the antigen was fixed before incubation with the patient sample (serum or cerebrospinal fluid) and whether the cell membrane is intact ('live'). Live cell-based assays and live neurone-based assays neither fix the surface antigen nor permeabilise the membrane before exposure to the patient's sample. By contrast, in fixed permeabilised cell-based assays and tissue-based assays, target antigens are potentially altered by fixation and cell membrane integrity is lost. Figure modified from Ramanathan *et al.*³ CBA, cell-based assay.

diagnostic testing. Autoantibodies can be detected in both CSF and serum, and—put simply—*both* samples should be sent in all patients, wherever possible. However, there are important nuances between conditions. For example, LGI1-antibodies are not detected in around 50% of patient CSF samples.³³ By contrast, NMDAR-antibodies are consistently detected in the CSF of patients and said to be absent in ~20% of serum samples. Finding autoantibodies in the CSF but not the serum does not seem biologically intuitive given the immunological response likely begins in the periphery, perhaps most clearly in patients with (systemic) ovarian teratomas. By comparison to serum, CSF has a ~500-fold lower total IgG concentration and hence offers a sample with inherently lower backgrounds in diagnostic assays, which may explain the above finding. Yet, in some patients, for example,

those who are irritable, not suitable for sedation and in young children, serum may be the only pragmatic sample source. However, serum NMDAR-antibodies occur at ~3% rates in healthy and disease controls and hence so called 'clinically irrelevant' serum NMDAR-antibody results are not infrequent, again supporting the use of CSF for detecting NMDAR-antibodies. For these reasons, in this condition, the absence of CSF positivity is considered to indicate a lack of direct autoantibody pathogenicity. However, as described above, the opposite is true for LGI1-antibodies. Therefore, whenever possible, paired CSF-serum should be tested.

When sending and interpreting results for CNS autoantibody testing, it is important to emphasise the clinical hypothesis. Clinicians interpreting these results should also take into account differences in sensitivity and specificity of individual autoantibody tests (figure 2). For example, several clinical laboratories use commercially available 'fixed' cell-based assay kits. These kits have limitations as they inherently alter the native antigens with fixation, creating non-physiological autoantigens.³ By contrast, live cell-based assays detect autoantibodies against the closest resemblance of the targets that would be encountered *in vivo*. Live cell-based assays are often more sensitive than fixed ones^{52–54}; therefore, in the setting of an appropriate clinical syndrome, a negative test on fixed cell-based assay should raise suspicion of a false-negative result and clinicians should consider having these samples re-tested at a reference laboratory.

'I'm sure this patient has an autoantibody'

We continue to see several patients with no known autoantibody, but a clinical syndrome compatible with autoimmune encephalitis. In these so called 'seronegative' cases, where there is a clinical suspicion of an autoantibody but no identified defined autoantigenic target, we aim to begin early immunotherapy whenever possible given that autoimmune encephalitis is a treatable syndrome. In parallel, we continue to re-evaluate possible alternative diagnoses but escalate therapy when autoimmune encephalitis is considered the likeliest cause.

Various research-level tests can offer greater diagnostic clarity (figure 2).³ The patient sera/CSF can be applied to rodent brain sections to identify neuroglial reactivity and, perhaps, a distinctive binding pattern. This approach has been used in several instances as an initial step in target identification, but is also a valuable technique to simply diagnose a brain reactive autoantibody.⁵⁵ As this method exposes patient autoantibodies to both intracellular and extracellular domains of neuroglial proteins, it does not exclusively detect pathogenic species. To define these, it is possible to assess reactivity of serum or CSF IgGs against the surface of cultured neurones or astrocytes. While time consuming to perform, binding patterns have provided

valuable information for many patients with suspected autoantibody-mediated syndromes who were negative on available clinical assays. These tests are available on request from research laboratories.

CLOSING REMARKS

The recognition of neuronal surface autoantibodies as a cause of encephalitis has had far-reaching implications. It has helped to define a group of immunotherapy-responsive disorders, describe their pathogenesis, and develop therapies informed by these pathogenic mechanisms. Further, the scope of autoantibody-mediated diseases has expanded beyond the initial limbic encephalitis picture to include other polysymptomatic immunotherapy-responsive syndromes. Clinical suspicion of these disorders remains the cornerstone to their detection and there are now many clinically recognisable syndromes described. Interpretation of autoantibody results should similarly be in the context of this clinical picture. Earlier recognition, treatment

and escalation of immunotherapy in many of these syndromes can lead to improved outcomes and reduced disability.

Twitter Sarosh R Irani @ANG_Oxford

Contributors All authors contributed to the drafting, editing and intellectually to this article.

Funding SRI is supported by the Wellcome Trust (104079/Z/14/Z), BMA Research Grants—Vera Down grant (2013), Margaret Temple (2017), Epilepsy Research UK (P1201), the Fulbright UK-US commission (MS Society research award) and by the NIHR Oxford Biomedical Research Centre. This research was funded in whole, or in part, by the Wellcome Trust [Grant number 104079/Z/14/Z]. For the purpose of Open Access, the author has applied a CC BY public copyright licence to any author accepted manuscript version arising from this submission. SB has received salary support from the NIHR and is currently supported by the Wellcome Trust. CU is supported by the Friedman Award for Health Scholars (University of British Columbia) and received salary support from the UBC Division of Neurology. The views expressed are those of the author(s) and not necessarily those of the NHS, the NIHR, the Department of Health, UBC or Vancouver Coastal Health. The funders had no role in the preparation, review or approval of the manuscript; and decision to submit the manuscript for publication.

Competing interests SRI is a coapplicant and receives royalties on patent application WO/2010/046716 (U.K. patent no., PCT/GB2009/051441) entitled 'Neurological Autoimmune Disorders'. The patent has been licensed commercially for the development of assays for LGI1 and other VGKC-complex antibodies. SRI and SB are coapplicants on a patent application entitled 'Diagnostic Strategy to improve specificity of CASPR2 antibody detection' (PCT/GB2019/051257, publication number WO/2019/211633 and UK1807410.4). SRI has received honoraria from UCB, MedImmune, ADC therapeutics and Medlink Neurology, and research support from CSL Behring, UCB and ONO Pharma. CU declares no competing interests with respect to this publication.

Patient consent for publication Obtained.

Provenance and peer review Commissioned; externally peer reviewed by Neil Anderson, Auckland, New Zealand, and Anais Thouin, Newcastle-upon-Tyne, UK.

Open access This is an open access article distributed in accordance with the Creative Commons Attribution 4.0 Unported (CC BY 4.0) license, which permits others to copy, redistribute, remix, transform and build upon this work for any purpose, provided the original work is properly cited, a link to the licence is given, and indication of whether changes were made. See: <https://creativecommons.org/licenses/by/4.0/>.

ORCID iDs

Christopher E Uy <http://orcid.org/0000-0002-0688-6522>
Sophie Binks <http://orcid.org/0000-0003-0991-5998>
Sarosh R Irani <http://orcid.org/0000-0002-7667-9748>

REFERENCES

- 1 Dalmau J, Graus F. Antibody-Mediated encephalitis. *N Engl J Med* 2018;378:840–51.
- 2 Sun B, Ramberger M, O'Connor KC, *et al*. The B cell immunobiology that underlies CNS autoantibody-mediated diseases. *Nat Rev Neurol* 2020;16:481–92.
- 3 Ramanathan S, Al-Diwani A, Waters P, *et al*. The autoantibody-mediated encephalitides: from clinical observations to molecular pathogenesis. *J Neurol* 2021;268:1689–707.
- 4 Varley J, Taylor J, Irani SR. Autoantibody-mediated diseases of the CNS: structure, dysfunction and therapy. *Neuropharmacology* 2018;132:71–82.

Further reading

- ▶ Graus F, Titulaer MJ, Balu R, *et al*. A clinical approach to diagnosis of autoimmune encephalitis. *Lancet Neurol* 2016;15:391–404. doi:10.1016/S1474-4422(15)00401-9.A.
- ▶ Ramanathan S, Al-Diwani A, Waters P, *et al*. The autoantibody-mediated encephalitides: from clinical observations to molecular pathogenesis. *J Neurol* 2019;1–19. doi:10.1007/s00415-019-09590-9.
- ▶ Sun B, Ramberger M, O'Connor KC, *et al*. The B cell immunobiology that underlies CNS autoantibody-mediated diseases. *Nat Rev Neurol* 2020;16:481–92. doi:10.1038/s41582-020-0381-z.

Key points

- ▶ Autoimmune causes of encephalitis are at least as common as infectious causes and should be considered early.
- ▶ Several characteristic core phenotypic manifestations may strongly suggest an underlying autoantibody-mediated encephalitis; this should raise the consideration of empiric immunotherapy once infectious causes are reasonably excluded.
- ▶ Early immunotherapy improves outcomes in patients with autoimmune encephalitis.
- ▶ Whenever possible, paired cerebrospinal fluid and serum should be tested, and clinicians should emphasise the clinical hypothesis when interpreting the results.
- ▶ Brain sections and neuronal cultures are valuable methods to detect autoantibodies in patients who have a suspected autoimmune condition despite negative antigen-specific results.

- 5 Gable MS, Sheriff H, Dalmau J, *et al.* The frequency of autoimmune N-methyl-D-aspartate receptor encephalitis surpasses that of individual viral etiologies in young individuals enrolled in the California encephalitis project. *Clin Infect Dis* 2012;54:899–904.
- 6 Dubey D, Pittock SJ, Kelly CR, *et al.* Autoimmune encephalitis epidemiology and a comparison to infectious encephalitis. *Ann Neurol* 2018;83:166–77.
- 7 Granerod J, Ambrose HE, Davies NW, *et al.* Causes of encephalitis and differences in their clinical presentations in England: a multicentre, population-based prospective study. *Lancet Infect Dis* 2010;10:835–44.
- 8 Graus F, Titulaer MJ, Balu R, *et al.* A clinical approach to diagnosis of autoimmune encephalitis. *Lancet Neurol* 2016;15:391–404.
- 9 Kamei S, Sekizawa T, Shiota H, *et al.* Evaluation of combination therapy using aciclovir and corticosteroid in adult patients with herpes simplex virus encephalitis. *J Neurol Neurosurg Psychiatry* 2005;76:1544–9.
- 10 Al-Diwani A, Handel A, Townsend L, *et al.* The psychopathology of NMDAR-antibody encephalitis in adults: a systematic review and phenotypic analysis of individual patient data. *Lancet Psychiatry* 2019;6:235–46.
- 11 Varley JA, Andersson M, Grant E, *et al.* Absence of neuronal autoantibodies in neuropsychiatric systemic lupus erythematosus. *Ann Neurol* 2020;88:1244–50.
- 12 Miller TD, Chong TT-J, Aimola Davies AM, *et al.* Focal CA3 hippocampal subfield atrophy following LGI1 VGKC-complex antibody limbic encephalitis. *Brain* 2017;140:1212–9.
- 13 Miller TD, Chong TT-J, Aimola Davies AM, Davies AMA, *et al.* Human hippocampal CA3 damage disrupts both recent and remote episodic memories. *Elife* 2020;9:1–47.
- 14 Irani SR, Stagg CJ, Schott JM, *et al.* Faciobrachial dystonic seizures: the influence of immunotherapy on seizure control and prevention of cognitive impairment in a broadening phenotype. *Brain* 2013;136:3151–62.
- 15 Irani SR, Michell AW, Lang B, *et al.* Faciobrachial dystonic seizures precede LGI1 antibody limbic encephalitis. *Ann Neurol* 2011;69:892–900.
- 16 Gadoth A, Pittock SJ, Dubey D, *et al.* Expanded phenotypes and outcomes among 256 LGI1/CASPR2-IgG-positive patients. *Ann Neurol* 2017;82:79–92.
- 17 Hamid SHM, Whittam D, Saviour M, *et al.* Seizures and encephalitis in myelin oligodendrocyte glycoprotein IgG disease vs aquaporin 4 IgG disease. *JAMA Neurol* 2018;75:65–71.
- 18 Ramanathan S, O'grady GL, Malone S, *et al.* Isolated seizures during the first episode of relapsing myelin oligodendrocyte glycoprotein antibody-associated demyelination in children. *Dev Med Child Neurol* 2019;61:610–4.
- 19 Waters P, Fadda G, Woodhall M, *et al.* Serial anti-myelin oligodendrocyte glycoprotein antibody analyses and outcomes in children with demyelinating syndromes. *JAMA Neurol* 2020;77:82–93.
- 20 Petit-Pedrol M, Armangue T, Peng X, *et al.* Encephalitis with refractory seizures, status epilepticus, and antibodies to the GABA_A receptor: a case series, characterisation of the antigen, and analysis of the effects of antibodies. *Lancet Neurol* 2014;13:276–86.
- 21 Spatola M, Petit-Pedrol M, Simabukuro MM, Castro FJ, *et al.* Investigations in GABA_A receptor antibody-associated encephalitis. *Neurology* 2017;88:1012–20.
- 22 Lancaster E, Lai M, Peng X, *et al.* Antibodies to the GABA(B) receptor in limbic encephalitis with seizures: case series and characterisation of the antigen. *Lancet Neurol* 2010;9:67–76.
- 23 McGinty RN, Handel A, Moloney T, *et al.* Clinical features which predict neuronal surface autoantibodies in new-onset focal epilepsy: implications for immunotherapies. *J Neurol Neurosurg Psychiatry* 2021;92:291–294:291–4.
- 24 de Bruijn MAAM, Bastiaansen AEM, Mojzisova H, *et al.* Antibodies contributing to focal epilepsy signs and symptoms score. *Ann Neurol* 2021;89:698–710.
- 25 Varley JA, Webb AJS, Balint B, *et al.* The Movement disorder associated with NMDAR antibody-encephalitis is complex and characteristic: an expert video-rating study. *J Neurol Neurosurg Psychiatry* 2019;90:724–6.
- 26 Mohammad SS, Fung VSC, Grattan-Smith P, *et al.* Movement disorders in children with anti-NMDAR encephalitis and other autoimmune encephalopathies. *Mov Disord* 2014;29:1539–42.
- 27 Tobin WO, Lennon VA, Komorowski L, *et al.* Dppx potassium channel antibody: frequency, clinical accompaniments, and outcomes in 20 patients. *Neurology* 2014;83:1797–803.
- 28 Carvajal-González A, Leite MI, Waters P, *et al.* Glycine receptor antibodies in perm and related syndromes: characteristics, clinical features and outcomes. *Brain* 2014;137:2178–92.
- 29 Tofaris GK, Irani SR, Cheeran BJ, *et al.* Immunotherapy-Responsive chorea as the presenting feature of LGI1-antibody encephalitis. *Neurology* 2012;79:195–6.
- 30 van Sonderen A, Ariño H, Petit-Pedrol M, *et al.* The clinical spectrum of Caspr2 antibody-associated disease. *Neurology* 2016;87:521–8.
- 31 Gaig C, Graus F, Compta Y, *et al.* Clinical manifestations of the anti-IgLON5 disease. *Neurology* 2017;88:1736–43.
- 32 Cabezas-García P, Mena-Vázquez N, Estivill Torrés G, *et al.* Response to immunotherapy in anti-IgLON5 disease: a systematic review. *Acta Neurol Scand* 2020;141:263–70.
- 33 Van SA, Thijs RD, Coenders EC. Anti-Lgi1 encephalitis: clinical syndrome and long-term follow-up. *Neurology* 2016;87:1149–456.
- 34 Valencia-Sanchez C, Pittock SJ, Mead-Harvey C, *et al.* Brain dysfunction and thyroid antibodies: autoimmune diagnosis and misdiagnosis. *Brain Commun* 2021:fcaa233.
- 35 Wang H-Y, Li T, Li X-L, *et al.* Anti-N-methyl-D-aspartate receptor encephalitis mimics neuroleptic malignant syndrome: case report and literature review. *Neuropsychiatr Dis Treat* 2019;15:773–8.
- 36 Caroff SN, Campbell EC. Risk of neuroleptic malignant syndrome in patients with NMDAR encephalitis. *Neurol Sci* 2015;36:479–80.
- 37 Lejste F, Thomas L, Picard G, *et al.* Neuroleptic intolerance in patients with anti-NMDAR encephalitis. *Neurol Neuroimmunol Neuroinflamm* 2016;3:e280.
- 38 Rozier M, Morita D, King M. Anti-N-Methyl-D-Aspartate receptor encephalitis: a potential mimic of neuroleptic malignant syndrome. *Pediatr Neurol* 2016;63:71–2.
- 39 Shin H-R, Jang Y, Shin Y-W, *et al.* High-Dose diazepam controls severe dyskinesia in anti-NMDA receptor encephalitis. *Neurology* 2020;10.1212/CPJ.0000000000001001.
- 40 Thompson J, Bi M, Murchison AG, *et al.* The importance of early immunotherapy in patients with Faciobrachial dystonic seizures. *Brain* 2018;141:348–56.
- 41 de Bruijn MAAM, van Sonderen A, van Coevorden-Hameete MH, *et al.* Evaluation of seizure treatment in anti-LGI1,

- anti-NMDAR, and anti-GABABR encephalitis. *Neurology* 2019;92:e2185–96.
- 42 Ilyas-Feldmann M, Prüss H, Holtkamp M. Long-Term seizure outcome and antiseizure medication use in autoimmune encephalitis. *Seizure* 2021;86:138–43.
 - 43 Titulaer MJ, McCracken L, Gabilondo I, *et al.* Treatment and prognostic factors for long-term outcome in patients with anti-NMDA receptor encephalitis: an observational cohort study. *Lancet Neurol* 2013;12:157–65.
 - 44 Balu R, McCracken L, Lancaster E, *et al.* A score that predicts 1-year functional status in patients with anti-NMDA receptor encephalitis. *Neurology* 2019;92:e244–52.
 - 45 Makuch M, Wilson R, Al-Diwani A, *et al.* N-Methyl-D-Aspartate receptor antibody production from germinal center reactions: therapeutic implications. *Ann Neurol* 2018;83:553–61.
 - 46 Dubey D, Britton J, McKeon A, *et al.* Randomized placebo-controlled trial of intravenous immunoglobulin in autoimmune LGI1/CASPR2 epilepsy. *Ann Neurol* 2020;87:313–23.
 - 47 Stüve O, Warnke C, Deason K, *et al.* Cd19 as a molecular target in CNS autoimmunity. *Acta Neuropathol* 2014;128:177–90.
 - 48 Wilson R, Makuch M, Kienzler A-K, *et al.* Condition-Dependent generation of aquaporin-4 antibodies from circulating B cells in neuromyelitis optica. *Brain* 2018;141:1063–74.
 - 49 Binks S, Varley J, Lee W, *et al.* Distinct HLA associations of LGI1 and CASPR2-antibody diseases. *Brain* 2018;141:2263–71.
 - 50 Kornau H-C, Kreye J, Stumpf A, *et al.* Human cerebrospinal fluid monoclonal LGI1 autoantibodies increase neuronal excitability. *Ann Neurol* 2020;87:405–18.
 - 51 Kreye J, Wenke NK, Chayka M, *et al.* Human cerebrospinal fluid monoclonal N-methyl-D-aspartate receptor autoantibodies are sufficient for encephalitis pathogenesis. *Brain* 2016;139:2641–52.
 - 52 Waters P, Reindl M, Saiz A, *et al.* Multicentre comparison of a diagnostic assay: aquaporin-4 antibodies in neuromyelitis optica. *J Neurol Neurosurg Psychiatry* 2016;87:1005–15.
 - 53 Waters PJ, Komorowski L, Woodhall M, *et al.* A multicenter comparison of MOG-IgG cell-based assays. *Neurology* 2019;92:10.1212/WNL.0000000000007096–15.
 - 54 McCracken L, Zhang J, Greene M, *et al.* Improving the antibody-based evaluation of autoimmune encephalitis. *Neurol Neuroimmunol Neuroinflamm* 2017;4:e404–7.
 - 55 Irani SR, Pettingill P, Kleopa KA, *et al.* Morvan syndrome: clinical and serological observations in 29 cases. *Ann Neurol* 2012;72:241–55.
 - 56 Dalmau J, Gleichman AJ, Hughes EG, *et al.* Anti-Nmda-Receptor encephalitis: case series and analysis of the effects of antibodies. *Lancet Neurol* 2008;7:1091–8.
 - 57 Ariño H, Armangué T, Petit-Pedrol M, *et al.* Anti-LGI1-associated cognitive impairment: presentation and long-term outcome. *Neurology* 2016;87:759–65.
 - 58 Laurido-Soto O, Brier MR, Simon LE, *et al.* Patient characteristics and outcome associations in AMPA receptor encephalitis. *J Neurol* 2019;266:450–60.
 - 59 Wynford-Thomas R, Jacob A, Tomassini V. Neurological update: MOG antibody disease. *J Neurol* 2019;266:1280–6.
 - 60 Gaig C, Compta Y. Neurological profiles beyond the sleep disorder in patients with anti-IgLON5 disease. *Curr Opin Neurol* 2019;32:493–9.
 - 61 Gresa-Arribas N, Planagumà J, Petit-Pedrol M, *et al.* Human neurexin-3α antibodies associate with encephalitis and alter synapse development. *Neurology* 2016;86:2235–42.
 - 62 Shin Y-W, Lee S-T, Park K-I, *et al.* Treatment strategies for autoimmune encephalitis. *Ther Adv Neurol Disord* 2018;11:175628561772234–19.
 - 63 Joint Formulary Committee. British National Formulary (online). London BMJ Gr.Pharm. Press.