

Test yourself

How good at neurology are you?

QUESTIONS

1. Please read the following passage.

A 65-year-old man, (see Fig. 1), was referred with numb feet. He had first noticed the symptoms over 10 years ago, but had ignored them. The numbness had steadily got worse, and he was now starting to fall over because of poor balance.

He was a heavy smoker with a history of chronic obstructive airway disease and hypertension. A squamous cell carcinoma had been removed from his left arm 3 years previously. He took regular doxazosin, simvastatin, bendrofluzide and aspirin, as well as his inhalers. He was adopted and did not know his family history.

On examination a slight decrease in pinprick and temperature sensation was noted in a glove and stocking distribution. He was areflexic with downgoing plantars.

FBC, Us & Es, Glucose, TSH, B12, folate, ANA, ENA, VDRL, and protein electrophoresis were all normal or negative.

What is the diagnosis?

Image from www.mrcophth.com, with permission.

Paul Goldsmith*, Graham Lennox* and Julian Ray†

Departments of *Neurology and †Neurophysiology, Addenbrooke's Hospital, Cambridge, UK. Email; pg255@hermes.cam.ac.uk; drslennox@aol.com; j.l.ray@medschl.cam.ac.uk
Practical Neurology, 2003, **3**, 378–379



Figure 1

2. Please consider the following:

The physicians send you a consult to see a man who commented on altered sensation around his nipples during his cardiovascular examinations (see Fig. 2).

What is your opinion ?

Heart sounds:



Figure 2

3. Study Fig. 3 then fill in the gaps:

- 1 _____ branches of _____ artery
- 2 _____ branches of _____ artery
- 3 _____ sulci and gyri
- 4 _____ bulb
- 5 _____ tract
- 6 _____ gyrus
- 7 _____ trigone

- 8 _____ artery
- 9 _____ artery
- 10 _____ artery
- 11 _____ artery
- 12 _____
- 13 _____ artery
- 14 _____ um
- 15 _____ artery
- 16 _____ nerve
- 17 _____ artery
- 18 _____ gyrus
- 19 _____ gyrus
- 20 _____ sulcus
- 21 _____ gyrus
- 22 _____ branch of _____ artery
- 23 _____ nerve
- 24 _____ artery
- 25 _____ artery
- 26 _____ nerve
- 27 _____ nerve
- 28 _____ nerve
- 29 _____ artery
- 30 _____ us
- 31 _____ artery
- 32 _____ artery
- 33 _____ artery
- 34 Ventral rootlets of _____

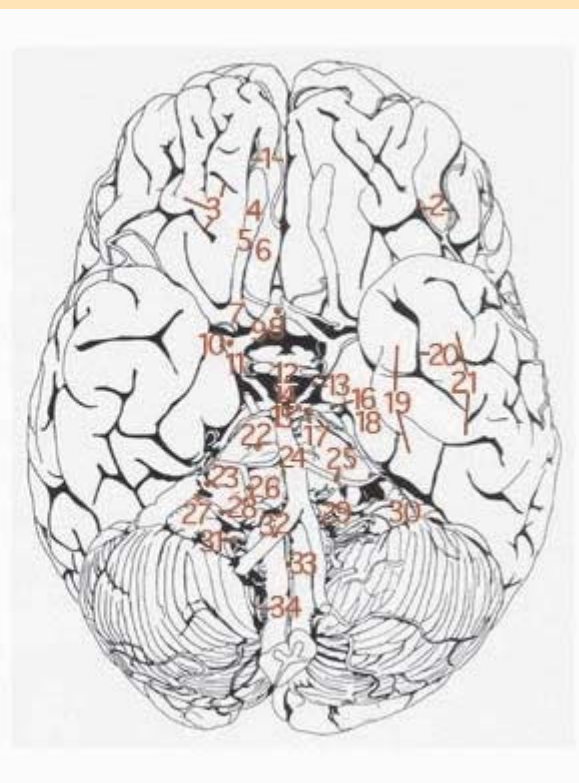


Figure 3

Answers on page 385